



- Data sharing to NEHII (HIE)
- Prescription Drug Monitoring Program (PDMP)
- Public health-supported initiatives
- Other DHHS-supported initiatives
- Opt-in/opt-out and consent management
- Hospital/provider onboarding
- User provisioning
- Training and education on HIE and PDMP
- Consumer/patient access



- Academic affiliate
- Other non-data sharing (i.e. QIN-QIOs)
- Research requests
- Quality improvement requests
- Measure development
- CMMI alignment
- Competitive grant partnerships
- Health data science competency



Standard Participant Offering

Available to NEHII data-sharing participants (included in subscription fees)

- Longitudinal health record: User interface to clinical and claims data
- Applications powered by aggregate data (care management, event notification, ePrescribing)
- Analytics powered by aggregate data (dashboard development, data engineering, medication analytics)
- Other services (workflow integration, reporting services)

Premium

Available at an additional fee

- Risk stratification (PMPY)
- Predictive modeling
- Ad hoc/custom reports

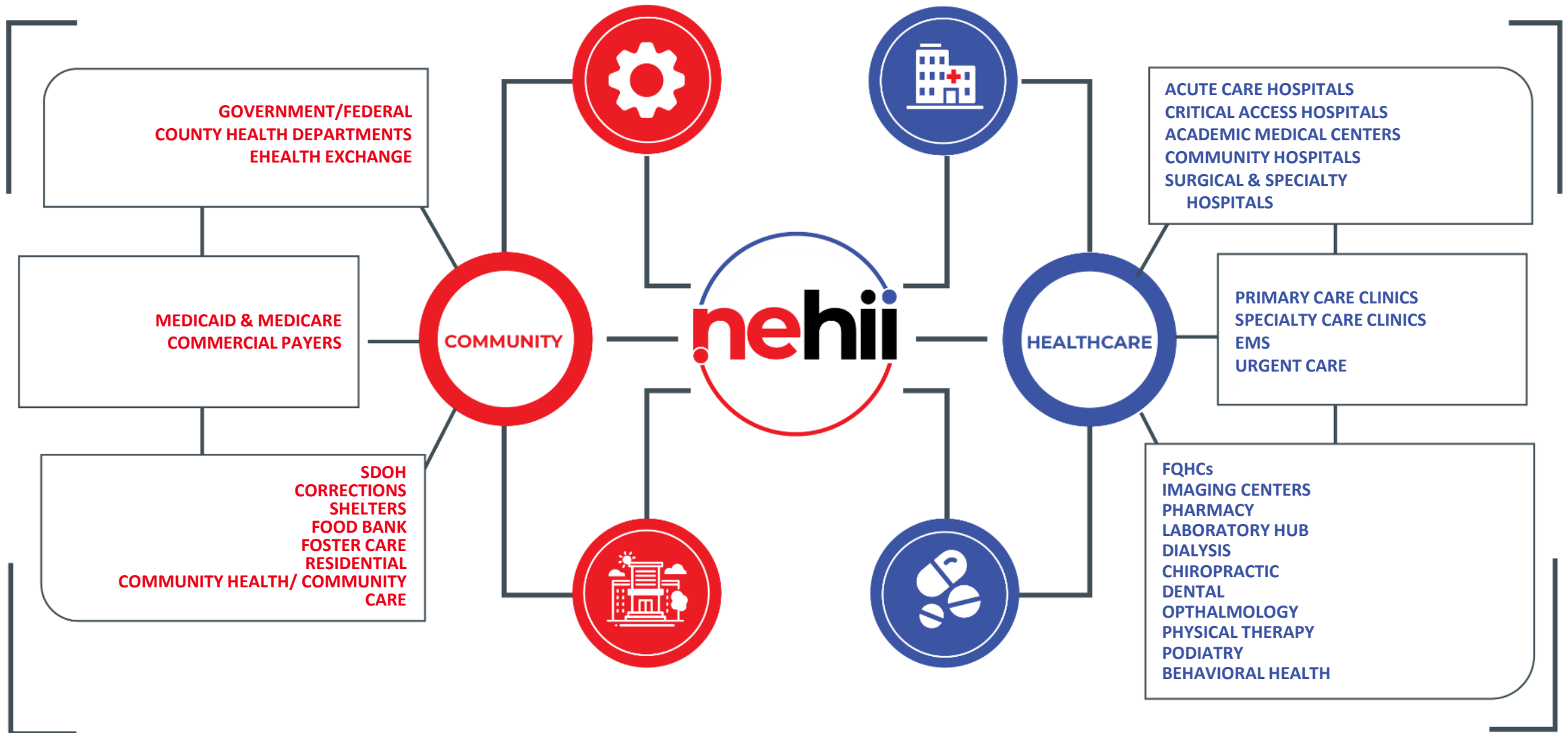


- Focus on community engagement and philanthropic interests
- Enabler of NEHII Inc. and the Nebraska Healthcare Collaborative

NEHII will empower healthier communities through the steadfast pursuit of:

- ADVANCING INTEROPERABILITY
- BRINGING DATA DEMOCRATIZATION TO CONSUMERS AND PROVIDERS
- CULTIVATING ECONOMIC VALUE
- DELIVERING A POPULATION HEALTH UTILITY





Community data points

Success:

Our Data sharing %

Challenges:

- Please stop faxing
- Rural- small N's
- Ambulatory space
- “Connectedness” of LTPAC

NEHII DATA-SHARING

- General acute hospitals: 20
- Critical access hospitals: 44
- Children's hospitals: 2
- Clinic/ambulatory sites: 153
- Specialty hospitals: 2

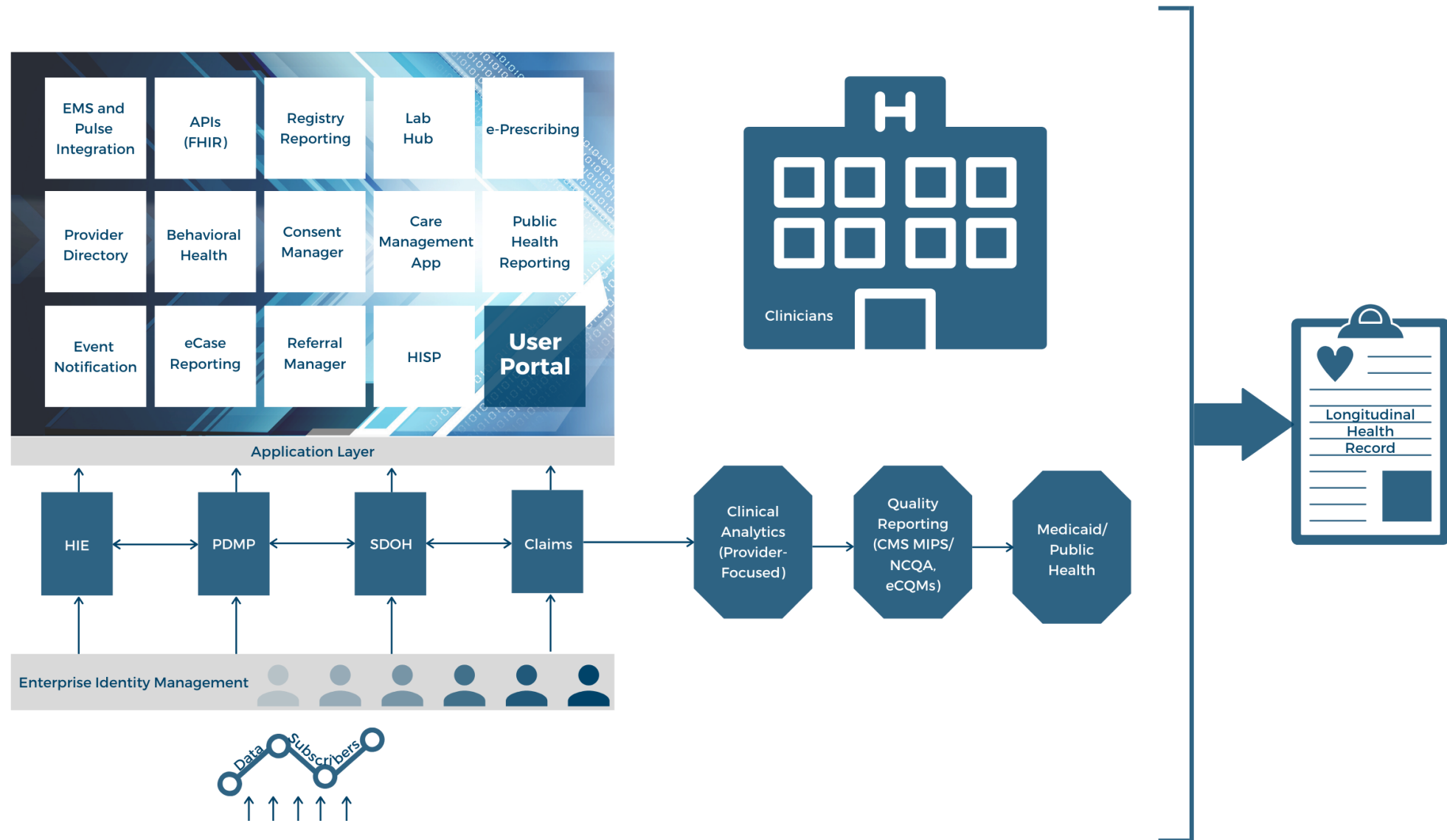
NON-DATA SHARING

- General acute hospitals: 1
- Critical access hospitals: 20
- Clinic/ambulatory sites: ~1500

LONG-TERM POST-ACUTE CARE

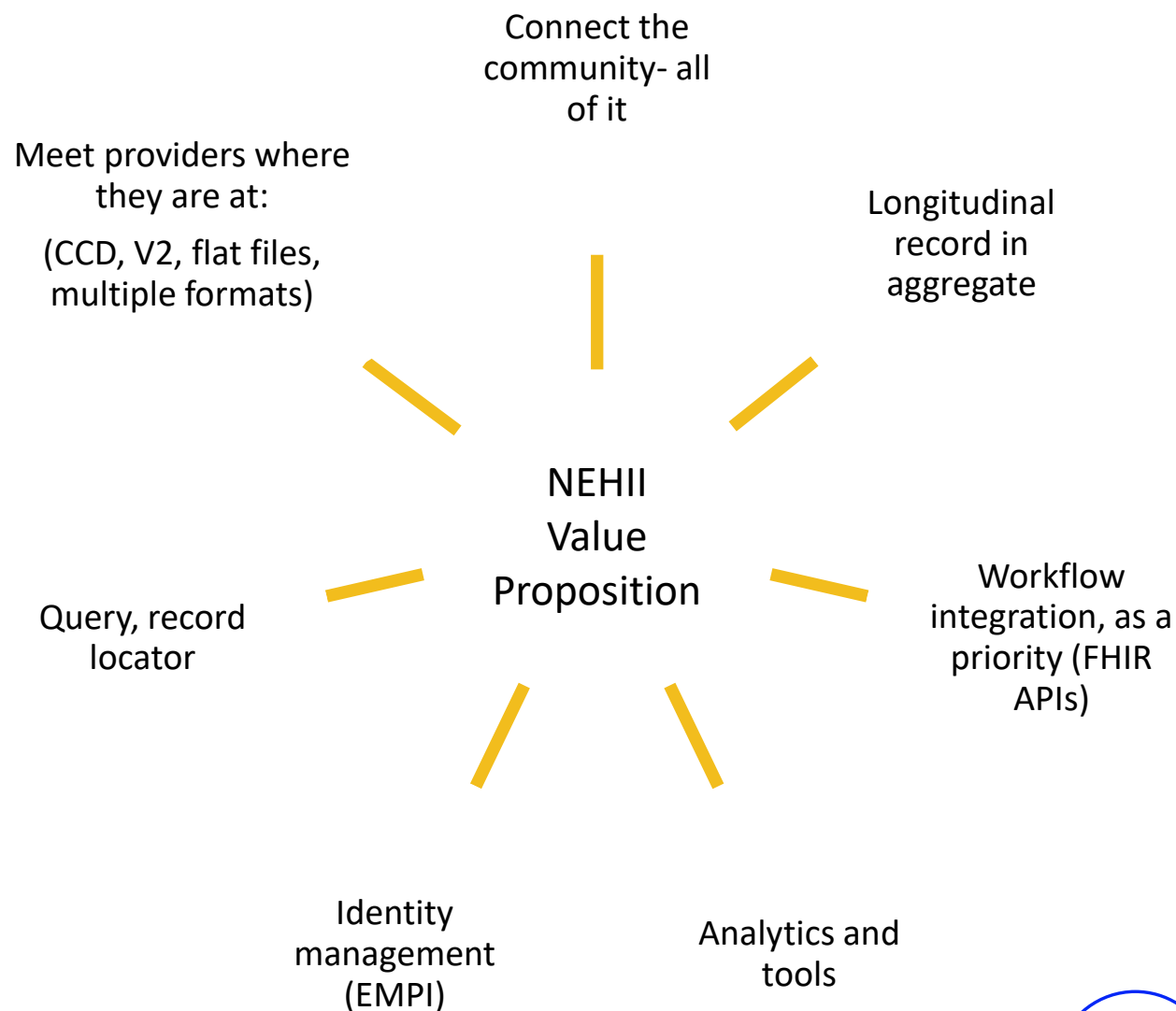
- 217 facilities in Nebraska
- 22 Live with NEHII

Person-centered Interoperability: Reducing the Burden of HIT



NEHII: A POPULATION HEALTH UTILITY

- Reduce the burden of data electronic health information
- Center on the last mile of interoperability
- Data query, record locator and retrieval important, but a commodity
- Focus areas:
 - Create the longitudinal health record for Nebraskans
 - Democratize data and the tools to succeed in value-based care
 - FHIR API for a zero-click experience



NEHII analytics services



QUASI-QUALIFIED ENTITY STATUS (QE)

Allows NEHII to analyze Medicare Parts A, B and D claims data on behalf of QCDR-participating providers

QUALIFIED CLINICAL DATA REGISTRY (QCDR)

Allows NEHII to report to the QPP/MIPS for connected providers

NCQA MEASURE CERTIFICATION

Allows NEHII data to be considered a valid “other data source” for HEDIS reporting

PUBLIC HEALTH REPORTING

Projects in process to redirect public health data through NEHII and back to public health for intervention and use

Availability of Bed Utilization and Analysis

Impact of COVID 19

TOTAL AVAILABLE BEDS

3,594

Total Staffed Beds

1,205

Total Occupied Beds

2,389

Total Beds Available

33.53%

Percentage Occupied

OCCUPANCY BY HOSPITAL

Overall					ICU				ER			
HOSPITAL NAME	Total Staffed Beds	Total Occupied Beds	Total Beds Available	Percentage Occupied	Total ICU Beds	Total ICU Beds Occupied	Total ICU Beds Available	Percentage Occupied ICU	Total ER Beds	Total ER Beds Occupied	Total ER Beds Available	Percentage Occupied ER

ADT Dashboard

 OVERALL ADMITS & DISCHARGES(04/13/2020)

385

IP Admits

297

IP Discharges

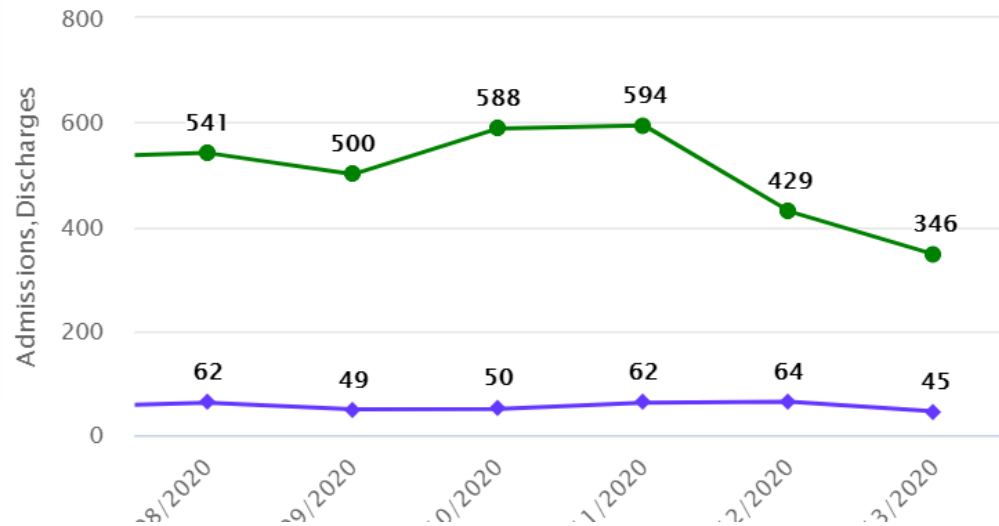
346

ED Admits

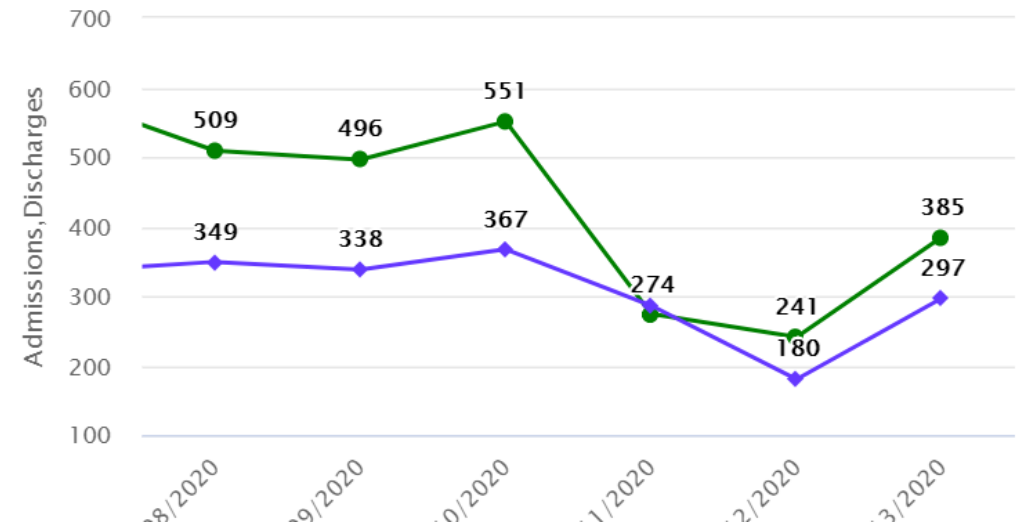
45

ED Discharges

Emergency Department



Inpatient



Forecasting Dashboard by County



Labs Dashboard (1 of 3)

Labs



3,849

Total Labs Ordered



3,847

Total Labs Completed



229

Tested Positive



5.95%

Positive Rate

Unique Patients



3,493

Total Labs Ordered



3,492

Total Labs Completed



203

Tested Positive



5.81%

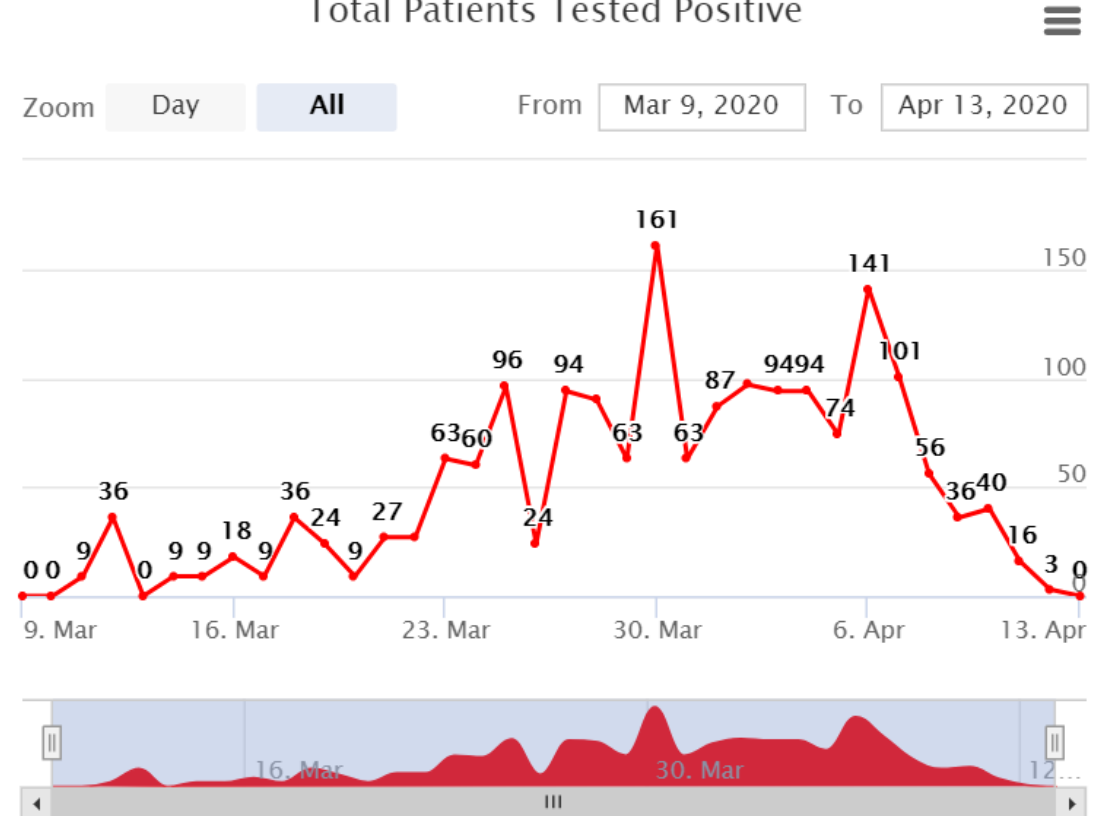
Positive Rate

Labs Dashboard (2 of 3)

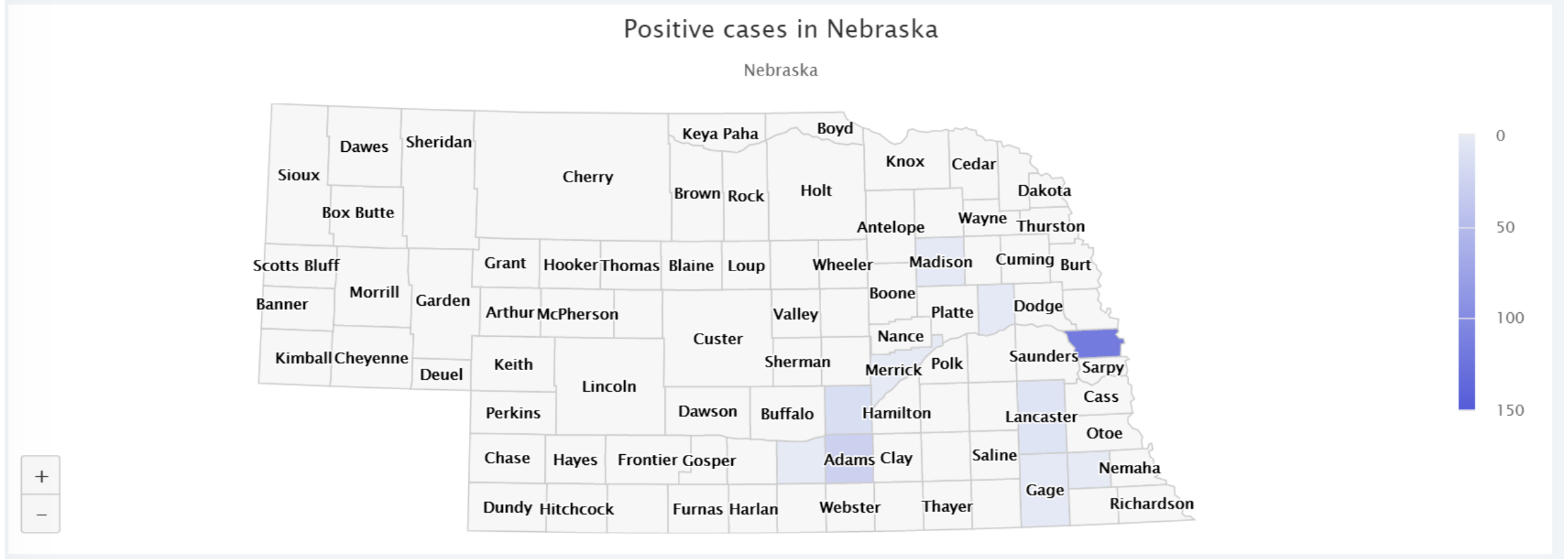
Labs Ordered vs. Completed



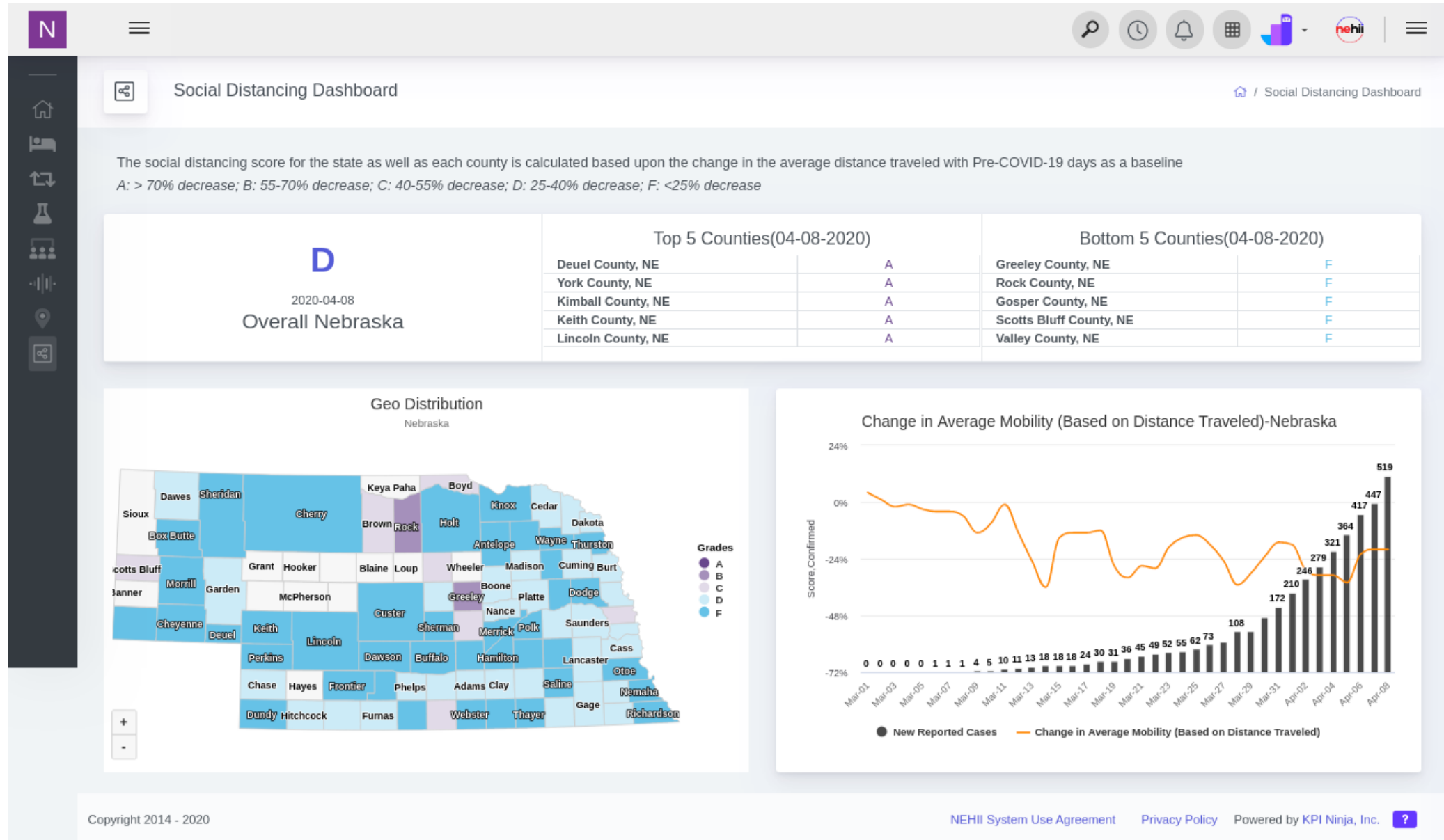
Total Patients Tested Positive



Labs Dashboard (3 of 3)



Social Distancing Dashboard



COVID-19 Dashboard Disclosures

Authorized users agree information contained within the NEHII Universe Dashboards is confidential and agree to not disseminate such information contained therein.

Social Distancing Dashboard: Data Source: COVID-19 Reported Case data obtained from Corona Data Scraper (for county-level data prior to March 22) and The Johns Hopkins Github Repository (for county-level data beginning March 22 and all state-level data) as detailed on Unacast's website.

Notes: The Social Distancing Dashboard does not identify any individual person, device, or household. Calculating the actual underlying social indexing score combines tens of millions of anonymous mobile phones and their interactions with each other every day and extrapolates the results to the population level.

Disclaimer: Social Distancing information is provided to NEHII pursuant to Unacast policies and procedures, of which NEHII agrees to abide, which includes prohibition of using social distancing data for any commercial purpose, including but not limited to selling aggregate or summary analytical data.

