



Council of Data Analytics Experts

August 25, 2016

2:00 p.m. EDT

Reminder

Please mute your line when not speaking

(* 6 to mute, *7 to unmute)

This call is being recorded

Agenda

- **Welcome and Overview of Agenda**

- **Workgroup goals**

- **Facilitated by:**
Chelsea N. King
Director, Product Innovation
Inovalon, Inc.

- **Speaker**
 - **Doug Dietzman**
 - **Executive Director of Great Lakes Health Connect**



OCTOBER 4-5, 2016
WASHINGTON, DC

Where healthcare challenges find solutions

eHI's Innovation Showcase is on!

Why Attend?

- **Get ready** for your “aha” moment at eHI's Innovation Showcase. Discover new ideas and the healthcare applications to enable your next leap forward.
- **Got a problem?** Find solutions to administrative, infrastructure, workflow, and consumer data integration challenges.
- **Need a partner?** Our innovative environment matches solution developers with healthcare senior executives for results.

We're bringing back the Innovation Challenge! Informative sessions will highlight best practices and innovations from leaders in: Data & Analytics, Interoperability, Privacy & Security and Clinical and Business Motivators.

Space is limited so Register now at <http://events.ehidc.org!>

eHI 2020 Roadmap

The objective of the 2020 Roadmap is to craft a multi-stakeholder solution by the private sector to transform care delivery by the year 2020 focusing on the following:

- Interoperability
- Business and Clinical Motivators
- Data Use and Access
- Data Analytics
- Privacy and Security

Data Analytics Group Charter

- Recognizing that the ability to collect meaningful exchange health data is valueless unless it is appropriately accessed and analyzed to inform clinical decisions about an individual's condition and possible interventions is an important component in our efforts towards better health outcomes.

- This group will focus on key issues including:
 - Access to data
 - Investigate the role of predictive analytics to improve health outcomes, using data and identification of risk profiles
 - Provide insight into the needs of the healthcare industry and possible solutions
 - Discover new examples of success stories that will be added to our online resource center
 - Identify overarching trends and give recommendations on best practices as well as innovation models
 - Identify priorities that can be recommended for federal partners to take action

COUNCIL OF DATA ANALYTICS EXPERTS

eHealth Initiative

August 25, 2016



Discussion Topics



1. GLHC Overview
2. Our View of Data & Analytic Needs
3. Current Capabilities and Perspectives on Where We Are Headed



Overview

129 connected hospitals

85% of Michigan's acute beds

4,000+ connected offices

18,000+ physicians

~6.5 Million persons in MPI

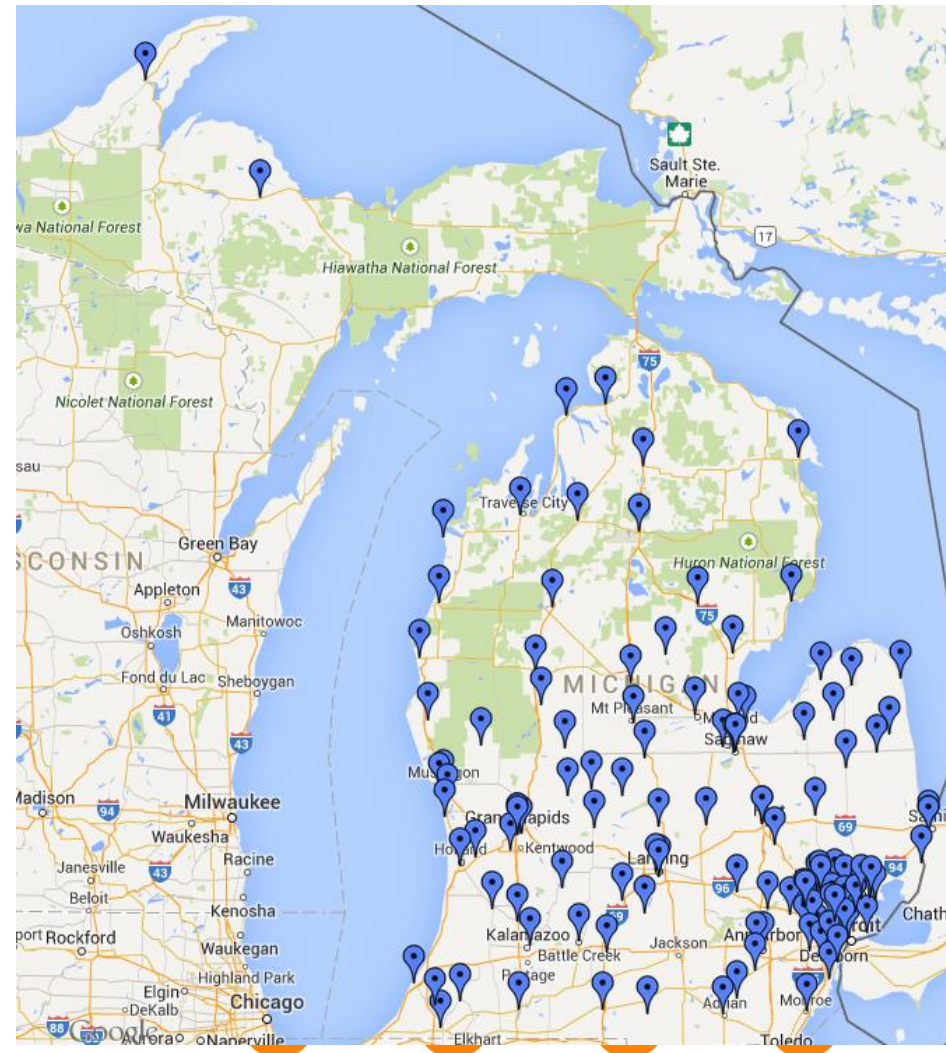
1 billion messages per year

501(c)3 - privately sustainable



GLHC

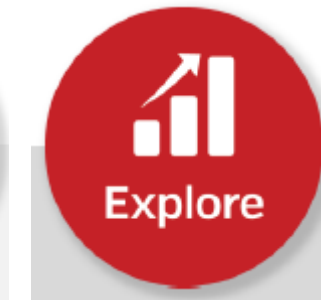
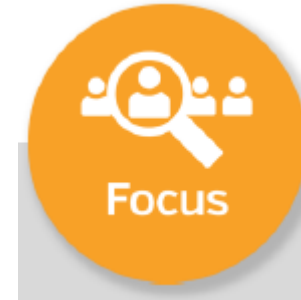
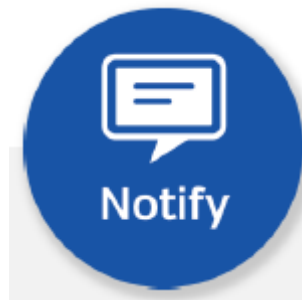
GREAT LAKES HEALTH CONNECT



Components



GLHC
GREAT LAKES HEALTH CONNECT



Connect to the Network

Share Through the Network

Drive Timely Engagement

Organize for Population Health

Empower Patients

Analyze Operational & Clinical Data

Enable collaboration and coordination between PH, BH, & SS professionals through secure, intuitive tools for referral management, messaging, and transitions of care.

Collaborate by seamlessly sharing patient data and streamlining lab & high-value orders, while integrating with 100s of unique EMRs and Health IT systems.

Deliver intelligent, timely, automated clinical event notifications as they happen throughout the network.

Access community information with a longitudinal view into a given patient or population and identify opportunities for patient and population health management.

Go beyond the portal and actively engage patients in their health and well-being through secure messaging and access to their data including sharing of clinical summaries.

Explore possibilities for improvement by applying robust analysis tools to operational and clinical data.

- Direct HISP for EMRs
- Individual Direct Addresses
- Closed-Loop Referral Mgmt

- Results Delivery
- Lab Orders
- Radiology Orders
- State Registries/MIHIN Use Cases
- PACS Imaging

- Event Notifications (GLHC & MIHIN)

- Virtual Integrated Patient Record (VIPR)
- Advance Care Plans
- Care/Action Plans

- Direct HISP Support of Patient Portals

- Operational Rptg
- Participant Analytics
- Community & Population Registry



Some Stats...



Statistics

	<u>March'16</u>	<u>June'16</u>
• Monthly Inbound Messages	46,732,487	42,697,675
• All-time Inbound Messages	906,816,114	1.06 B
• Unique Patient's in MPI	6,148,881	6,432,495
• Sum of Patient's Indexed by facility:		11,362,447

• **VIPR user accounts / logins / unique users / chart queries:**

- September: 1,702 / 1,049 / 157 / n/a
- December: 2,241 / 2,067 / 260 / n/a
- March: 2,849 / 3,563 / 404 / 14,593
- June: 3,019 / 4,506 / 381 / 28,996

• VIPR usage statistics represent actual users looking for data - there are no automatic/background queries that aren't used

	<u>March'16</u>	<u>June'16</u>
• ACD/PCD Submitters	56	68
• ACD/PCD Docs Uploaded	138	490
• ACD/PCD Docs YTD		1,722
• Results Delivered / mo	2,315,590	1,952,797
• Results Delivered YTD	-	12,958,538
• Ambulatory EMR Interfaces	-	483

Statistics

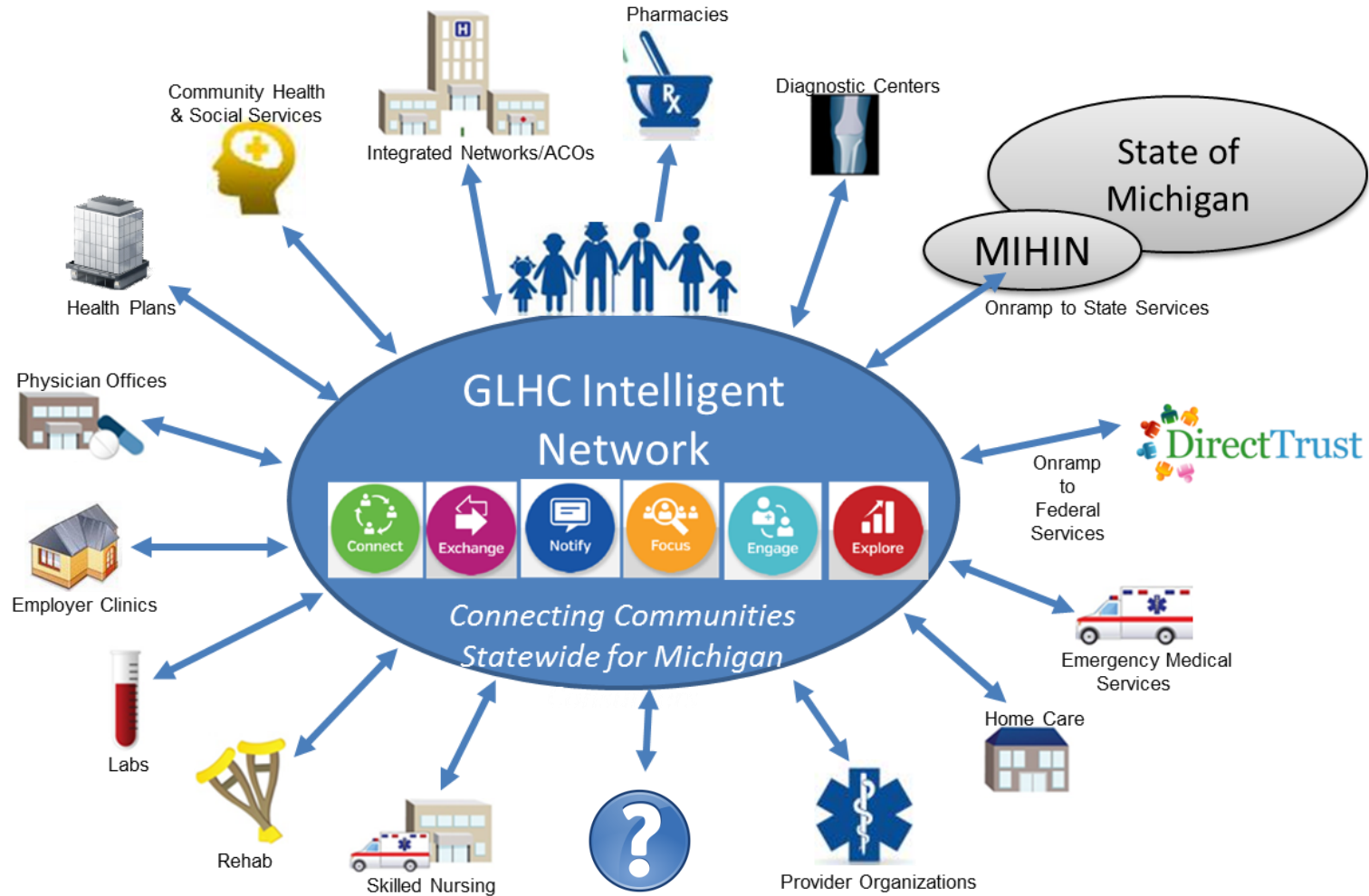
	<u>March'16</u>	<u>June'16</u>
• GLHC ADT Locations	106	134
• GLHC ADT Providers	561	675
• GLHC ADT Msgs Delivered	12,240	24,432
• Direct Locations	770	777
• Direct User Addresses	7,038	7,060
• Immunization Locations	-	1,303
• Immunization Transactions	-	741,840
• Immunization Query Locations	-	4
• Immunization Queries	-	192,450
• Reportable Lab Locations	-	93
• Reportable Lab Transactions	-	26,193
• Syndromic Locations	-	577
• Syndromic Transactions	-	4,621,080
• Referrals locations	1,157	1,240
• Referral transactions /mo	16,538	16,427



Community Ecosystem



GLHC
GREAT LAKES HEALTH CONNECT



Aggregation Needs



- We didn't start in the data aggregation space
- Data aggregation needs have continued to grow over the years
- Limits on what GLHC can do with the data our participants contribute
- Interesting debate of models underway nationally - consolidated versus federated
- We will be in a multi-stakeholder, multi-vendor environment forever



Data Needs



- Data needs to be organized around key scenarios and requirements:
 - Real-time delivery (*event notifications, results, orders, images*)
 - Longitudinal patient record for treatment and operations (*care management*)
 - Longitudinal patient record for population health management & reporting (*risk stratification, gaps in care, referral patterns, quality/value measures*)
 - Longitudinal patient record for research (*de-identified, patient-level research projects*)
 - Operational business statistics (*overall, by customer*)
- Same basic data set, different usage



Organizational Slice



GLHC
GREAT LAKES HEALTH CONNECT

We see opportunity as well across different organizational settings as the market evolves

- Enterprises (*health systems/IDNs, hospitals, POs, risk bearing networks, health plans, post acute care*)
- Multi-enterprise organizations (*acquisitions, affiliations, joint ventures, clinically integrated networks*)
- Communities (*surveillance registries, community health improvement measures, shared concerns - super utilizers & readmissions*)



GLHC Capabilities



GLHC
GREAT LAKES HEALTH CONNECT

- Medicity & Intersystems platforms
- Virtually Integrated Patient Record (VIPR)
 - For treatment & operations
- Community Analytics Platform
 - Core source of support for most other data & analytic needs



Perspectives

- We need to talk about data & analytics within a context to know what solution is required
- Certainly challenges getting data pulled together but arguably greater challenge in knowing what questions to ask to make good use of it
- Don't know specifics of business & clinical environment in the future but know that any direction will need good, integrated data



Q&A / Discussion



GLHC
GREAT LAKES HEALTH CONNECT



Doug Dietzman, Executive Director

ddietzman@gl-hc.org

844-GLHC-HIE



Participate as a Council Member

- Join Data Analytics listserv by contacting Claudia at Claudia.Ellison@ehidc.org

Next Meeting

- Next Workgroup Meeting:
 - September 22, 2pm ET

Thank you!