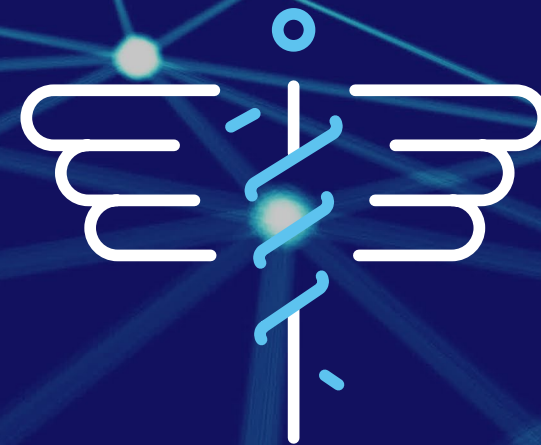
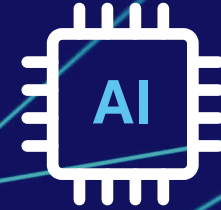


# Artificial Intelligence Is Ready to Transform Financial Operations. Are You?



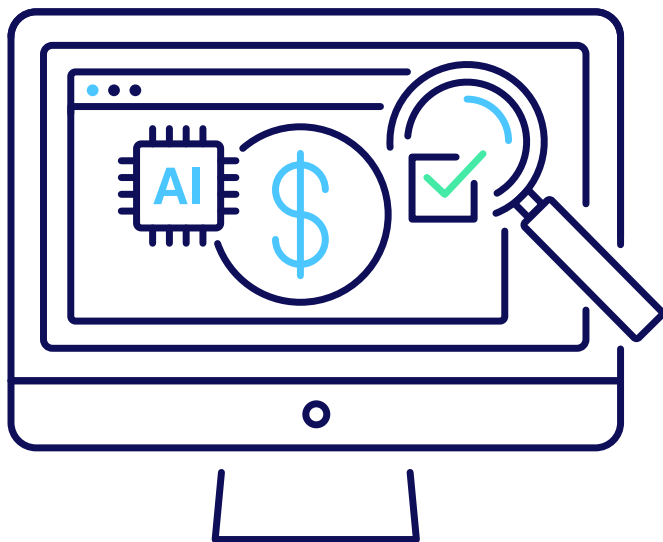
Start

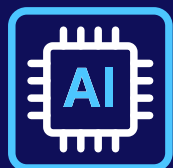


There's nothing artificial about AI's impact on healthcare.

It is driving improvements across the care continuum, in areas like cardiology, radiology and cancer treatment.

Now, AI is poised to tackle the revenue cycle, and its potential to reimagine performance is nothing short of groundbreaking.





# What is Artificial Intelligence?

AI uses computers to do work that usually requires human intelligence, thinking, or cognition.

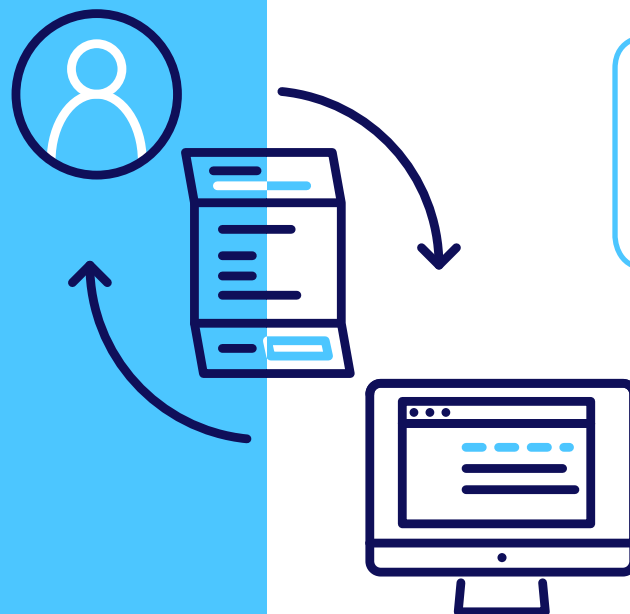
An AI system “learns” by combing through large volumes of data and uncovering patterns.

It continues to learn the more you interact with it, becoming smarter and more efficient over time.

Users take information from an AI solution and use it to make decisions, avoid mistakes, and ensure compliance

# AI Is Setting a New Standard for Revenue Cycle Performance

## And Charge Capture Is Ripe for Change



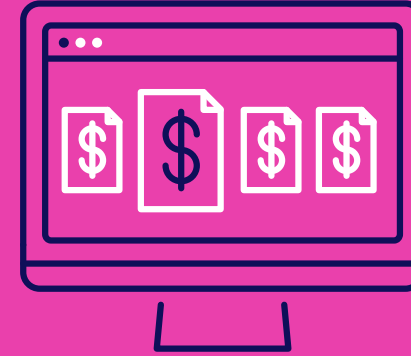
Charge capture is the documentation and coding process that runs parallel to patient care delivery.

Insufficient charge capture can result in millions of dollars in lost revenue—and compliance issues.

Given charge capture's repetitive nature, there are significant opportunities to apply AI to increase accuracy and reliability.

## Appreciating Charge Capture's Pain Points

# Why the Way We've Always Done It Isn't Working Anymore



Documentation and coding requirements are complex and always changing



These processes have a high potential for human error



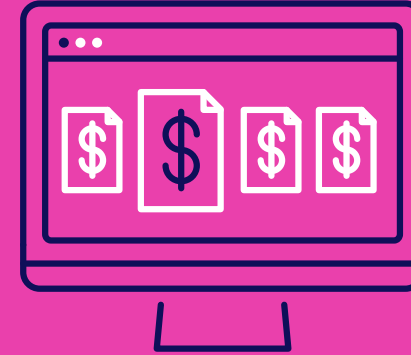
Traditional charge capture methods are time consuming and resource intensive



Volume + Time Pressures = Mistakes and Omissions

## Appreciating Charge Capture's Pain Points

# Why the Way We've Always Done It Isn't Working Anymore

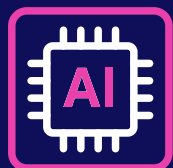


**Strong charge capture performance is necessary to combat increasing margin pressures.**

**Organizations have tried for years to improve performance in this area, and challenges still remain.**

**Poor performance results in revenue loss and compliance issues.**

**If you lose 1% of revenue due to poor charge capture, think of what that means in terms of revenue for a multimillion dollar organization.**



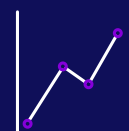
## How Can AI Help?



Predicts missing charges prior to claims submission



Flags missing charges alongside providers' existing workflows, highlighting the estimated charge value



Delivers prediction results in real time, at the point of decision-making



Automatically learns over time based on accepted and rejected predictions, making it adaptable and precise

## What does that mean for you?



- ✓ Less time auditing and reworking claims
- ✓ Increased missing charge detection
- ✓ Efficient gap closure
- ✓ Reduced charge lag
- ✓ More complete and accurate claims
- ✓ Less days in A/R
- ✓ Accelerated cash flow
- ✓ Reduced denials
- ✓ Stronger revenue integrity



## What does it mean for your staff?



- ✓ Helps them perform their job better
- ✓ Frees up time to focus on more complex tasks
- ✓ Boosts productivity
- ✓ Promotes job satisfaction



### Manual Audits

- Subject to human error
- Retroactive, requiring billing rework
- Result in delayed payments
- Resource-intensive
- Time-consuming
- Costly



### Rules-Based IT Solutions

- Missing charges identified based on static rules
- Rules may under-identify or over-identify missing charges
- Constant chargemaster and clinical process updates impact rules
- Manual corrections required to keep things current
- Time consuming
- Resource intensive

Why will AI outperform other documentation and coding improvement techniques?

Introducing Charge Capture Advisor:

# Change Healthcare's Answer to AI-Enabled Revenue Integrity Management



A cloud-enabled solution that uses Change Healthcare Artificial Intelligence to identify potentially missing charges in patient accounts prior to claims submission.

The technology works in collaboration with your providers and coders to help ensure top documentation and coding performance

Using Charge Capture Advisor (CCA), a healthcare professional can act quickly to resolve coding and documentation discrepancies and ensure a more complete claim prior to submission

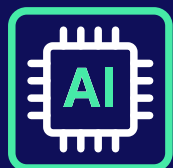
Introducing Charge Capture Advisor:

# Change Healthcare's Answer to AI-Enabled Revenue Integrity Management

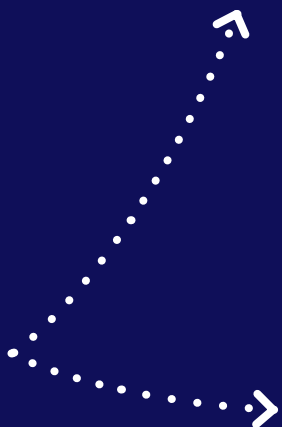


Commonly predicted charges include missed or incorrect codes related to

- ✓ diagnostics
- ✓ images or tests
- ✓ implants
- ✓ supplies
- ✓ drugs and injection administration

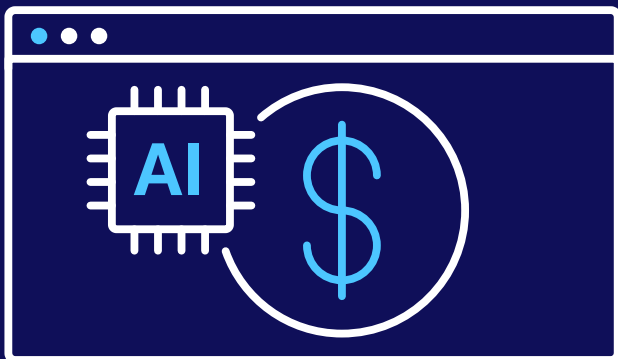


# What Makes Charge Capture Advisor Different from Other AI Solutions?



- ✓ Works alongside providers' existing HIS, coding, billing systems, and manual processes
- ✓ No need to replace existing software or change workflows
- ✓ Minimal IT department involvement

- ✓ An AI solution's strength correlates with the depth and breadth of data used to train the model
- ✓ Change Healthcare's AI is trained on 500 million service lines and 180 million unique (de-identified) claims, touching \$245 billion in charges
- ✓ This makes our solution highly efficient, accurate, and primed for exceptional learning over time



## Charge Chapter Advisor:

### Disrupting the Status Quo to Reimagine Performance

Set a new standard of revenue cycle excellence.  
Contact us for more information: 866-817-3813

Visit <https://www.changehealthcare.com/solutions/charge-capture-advisor>