



eHEALTH INITIATIVE

Real Solutions. Better Health.

What Is The Impact? Meaningful Use Stage 2 & Electronic Exchange Technology

****Audio for this webinar streams through the web. Please make sure the sound on your computer is turned on and you have speakers. If you need technical assistance, please contact ReadyTalk Customer Care: 800.843.9166.**

Housekeeping Issues

- All participants are muted
 - To ask a question or make a comment, please submit via the chat feature and we will address as many as possible after the presentations.
- Audio and Visual is through www.readytalk.com
 - If you are experiencing technical difficulties accessing audio through the web, there will be a dial-in phone number displayed for you to call. In addition, if you have any challenges joining the conference or need technical assistance, please contact ReadyTalk Customer Care: 800.843.9166.
- Today's slides will be available for download on our homepage at www.ehidc.org



About eHealth Initiative

- Since 2001, eHealth Initiative is the only national, non-partisan group that represents all the stakeholders in healthcare.
- Mission to promote use of information and technology in healthcare to improve quality, safety and efficiency.
- eHealth Initiative focuses its research, education and advocacy efforts in four areas:
 - Using Data and Analytics to Understand and Improve Care
 - IT Infrastructure to Support Accountable Care
 - Technology for Patients with Chronic Disease
 - Connecting Communities through Data Exchange



ANNUAL CONFERENCE 2014

THE ROADMAP TO HEALTHCARE DELIVERY TRANSFORMATION



January 28-29, 2014 | CHAMPIONSGATE FL

Discussion Topics Include:

#eHI2014

- *Disruptive Innovations in Data and Technology: Lessons Learned from Other Industries*
- *Leveraging Analytics to Support Population Health*
- *Privacy and Security: Challenges and Best Practices*
- *Much More!*

REGISTER NOW



Visit www.ehidc.org for more information.

MEDEANALYTICS®
MEASURE. MANAGE. LEAD.

Medicity™

A Healthagen Business

RelayHealth

1EDISOURCE



OPTUM™

eHEALTH INITIATIVE
Real Solutions. Better Health.



ANNUAL CONFERENCE 2014

THE ROADMAP TO HEALTHCARE DELIVERY TRANSFORMATION



January 28-29, 2014 | Orlando, FL

Early Bird Rates Expire January 2!

REGISTER NOW



#eHI2014

Sponsorship Opportunities Available!

Exhibit Booths Available!

Visit www.ehidc.org for more information.



eHEALTH INITIATIVE
Real Solutions. Better Health.

MEDEANALYTICS®
MEASURE. MANAGE. LEAD.

1EDISOURCE



Medicity™
A Healthagen Business
RelayHealth

OPTUM™

Thank You to Our Sponsor



Today' s Agenda

- Rebecca Jones, Program Manager, eHealth Initiative
- Dan Paoletti, CEO, The Ohio Health Information Partnership
- Cathy Costello, JD, The Ohio Health Information Partnership
- Robin Stursa, MBA, VP & CIO; Sisters of Charity Health System
- Q&A from Audience





Ohio Health Information Partnership
Health Information in a Heartbeat

What Is The Impact of Meaningful Use Stage 2 & Electronic Exchange Technology?

Dan Paoletti, CEO; The Ohio Health Information Partnership
Cathy Costello, JD; The Ohio Health Information Partnership
Robin Stursa, MBA VP & CIO; Sisters of Charity Health System
December 12, 2013

Ohio Health Information Partnership Presenters

Dan Paoletti
CEO

dpaoletti@ohionline.org

Cathy Costello
Regional Extension Center
Director

ccostello@ohionline.org

Topics

Ohio's
Statewide
Exchange

Public
Health
Reporting

Transitions
of Care

Other HIE
Measures

Stakeholder
Perspective
Q&A

Topics

Ohio's
Statewide
Exchange

Public
Health
Reporting

Transitions
of Care

Other HIE
Measures

Stakeholder
Perspective
Q&A

The Ohio Health Information Partnership started with HITECH Funding

REC

\$28.3 Million

Assist providers in
EHR selection,
implementation
and achieving
Meaningful Use

HIE

\$14.7 Million

Connect physicians,
long term care,
hospitals, behavioral
health and other care
providers to the state
Health Information
Exchange

Mission and Vision

The future of health care is connected communities across the nation that can communicate with one another and coordinate care, no matter where the patient goes.



- ❖ Educating and guiding providers through EHR adoption and meaningful use
- ❖ State-designated entity for HIE
- ❖ Creating a robust network to connect physicians, hospitals and others involved in a patient's care with one another
- ❖ Managing that network, so physicians and hospitals, clinicians and labs can all “talk” to one another.

Ohio's Progress to Meaningful Use

Medicaid Adoption and Use Success

6,058 Providers

\$238.5 Million



Medicare Meaningful Use Success

12,032 Providers

\$450.0 Million



Total Incentives to Ohio from CMS

18,090 Providers

\$688.5 Million

Ohio's Progress to Meaningful Use

The Ohio Health Information Partnership
Regional Extension Center

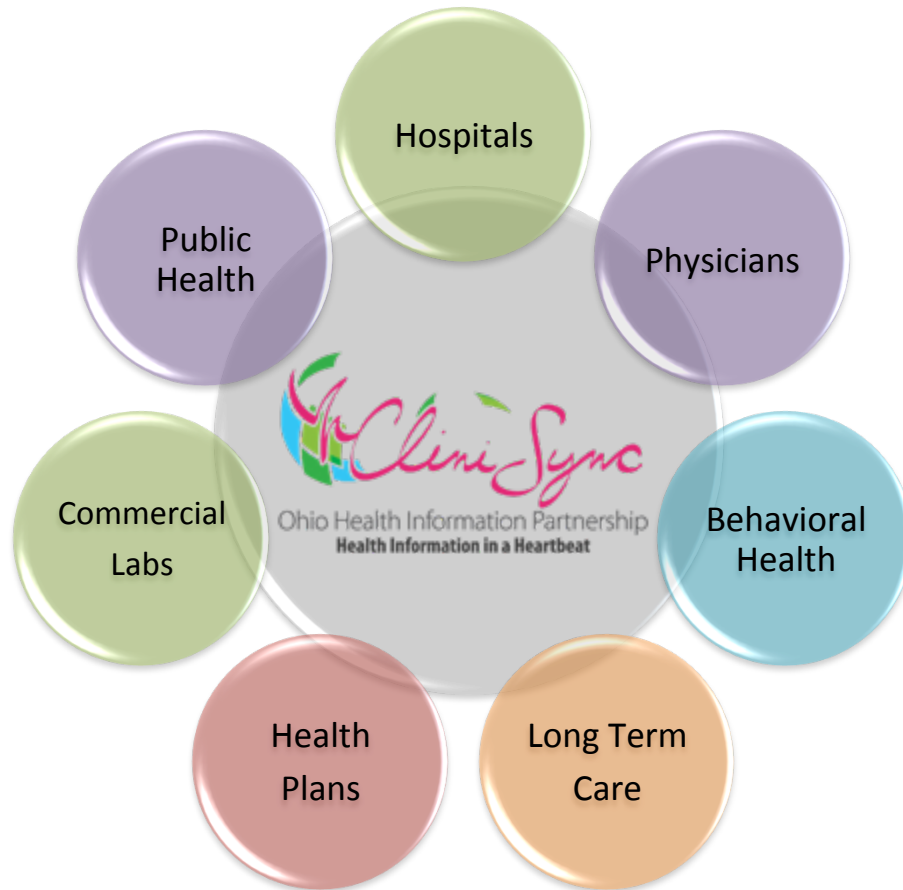
- Assisting 6,200 Primary Care Providers
- 6,000 Have Adopted an EMR
- 3,600 have reached MU



Meaningful Use
Support including
EHR and HIE
assistance for all
providers including
specialists, primary
care providers and
hospitals.

- MU Support
- Education
- Analysis
- Technology

Health Information Exchange & Community Adoption



Goal is electronic communications and care coordination across hospital systems, among physicians, other providers, health plans and those that manage care.

Medicity is Ohio's HIE Technology Partner

Ohio's EHR Landscape

Acute

EPIC
Meditech
Allscripts
Cerner
McKesson
CPSI
Healthland

Ambulatory

EPIC
Allscripts
e-MDs
Greenway
NextGen
eClinicalWorks
Athena
Cerner

141 Hospitals Contracted with CliniSync



Ohio's Committed Hospitals

Green: CliniSync Live Hospitals

Yellow: CliniSync Contracted Hospitals

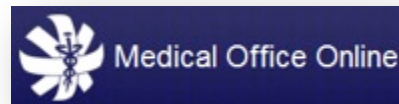
Blue: HealthBridge Live Hospitals

Almost 90% of hospitals in Ohio have committed to an HIE.

Over 87% of 11.5M Ohioans are being served.

21 Ambulatory EHR Vendors integrated & **LIVE!**

New!



Partnership
Health

Topics

Ohio's
Statewide
Exchange

Public
Health
Reporting

Transitions
of Care

Other HIE
Measures

Q&A

Ohio Department of Health MU2 Policy

ODH's Public Health Enrollment website is
www.OhioPublicHealthReporting.info

- ✧ ODH prefers the use of health information exchanges (HIEs) for public health reporting.
- ✧ EHs that are technically and operationally ready must enroll and register their intent to meet MU2 public health objectives with ODH.
- ✧ Registration of intent must occur by the 60th day of the provider's EHR reporting period.

Ohio Department of Health MU2 Policy

- ✧ EHs who register their intent no later than the first 60 days of their reporting period will be deemed to have met MU if:
 - ✧ EH is awaiting ODH's invitation to begin testing and validation
 - ✧ Testing of the EH's interface is still occurring at the end of the reporting period
- ✧ ODH/CliniSync will work together to “invite” the EH to begin the testing and validation process.

Immunization Registry Reporting

Measures

•MU Stage1 Measure

- Menu Measure 8
- Prior to Oct. 1, 2013 ODH did not accept immunization files for MU testing unless already transmitting
- After Oct. 1, 2013 ODH is accepting test files for MU Stage 1

•MU Stage 2 Measure

- Core Measure13
- Actual transmission required

ODH MU2 Policy

- Successful ongoing transmission required to Ohio's Immunization Information System
- Requirement for Stage 2 is an HL7 2.5.1 feed with CVX codes
- If ongoing submission was achieved prior to October 1, 2013, then existing HL7 2.3.1 interface is acceptable to meet MU if source system is 2014 certified

Electronic Laboratory Reporting (ELR)

Measures

- **MU Stage 1 Measure**
 - Menu Measure 9
 - Actual Transmission
- **MU Stage 2 Measure**
 - Core Measure 14
 - Actual transmission

ODH MU2 Policy

- Successful ongoing transmission required to Ohio's Disease Reporting System
- Requirement for Stage 2 is an HL7 2.5.1 feed
- Must report lab results that qualify as one of the 13 minimum reportable conditions
- Must identify reportable results using required [LOINC](#) and [SNOMED](#) codes (if applicable)

Electronic Laboratory Reporting (ELR)

13 Reportable Conditions

- Campylobacteriosis
- Chlamydia Infections
- Cryptosporidiosis
- Giardiasis
- Gonococcal Infections
- Hepatitis B
- Hepatitis C
- HIV
- Pertussis
- Salmonellosis
- Shigellosis
- Syphilis
- Varicella

ODH MU2 Policy

- By Ohio law, providers are still responsible for reporting approximately 80 conditions either manually or electronically to the Ohio Department of Health (ODH) within defined timeframes.
- Therefore each year, ODH will add an additional 10 – 15 reportable conditions to the minimum ELR list until all tests are being transmitted electronically.

Syndromic Surveillance

Measures

- **MU Stage 1 Measure**
 - Menu Measure 10
 - Test capability
- **MU Stage 2 Measure**
 - Core Measure 15
 - Actual transmission

ODH MU2 Policy

- Successful ongoing transmission required to EpiCenter (HMS/RODS)
- Requirement for Stage 2 is for an HL7 2.5.1 feed with the following fields are included:
 - Initial patient temperature
 - Discharge disposition
 - Discharge diagnosis
- Can meet Stage 2 with an HL7 2.3.1 feed only if initial submission was prior to October 1, 2013 and the above fields were included.

MU Certifications for Public Health

Seeking 2014 EHR Modular Certification



- ✧ CDC/ONC confirmed intent for HIEs to be certified for public health measures
- ✧ CliniSync's technology partner, Medicity, has completed 2014 modular certification testing for all public health measures through Drummond
- ✧ Certification pending final official ONC approval before available on CHPL website

How CliniSync Can Help

Immunization Reporting (IR)

We can accommodate feed to ODH once they accept real-time data without reconfiguring delivery mechanism

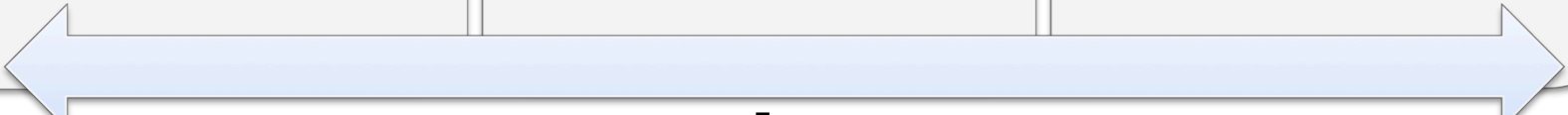
Electronic Lab Reporting (ELR)

We've created an assessment tool to help hospitals identify the tests associated with the 13 minimum reportable conditions

Syndromic Surveillance

If providers do not currently send data to EpiCenter, we can help them initiate an agreement.

If they are currently sending data, we can include these feeds in their current VPN tunnel

- 
- Establish a connection to HMS or ODH
 - Ensure file meets format requirements
 - Support ongoing transmission

NO ADDITIONAL COST and NO ODH QUEUEING


Hospital Readiness Checklists

✧ CliniSync created measure-specific fact sheets that include:

- ✧ Ohio's MU2 Policy
- ✧ Hospital Readiness Checklist
- ✧ CliniSync Next Steps
- ✧ Technical Requirements
- ✧ Certification Information
- ✧ Where to Direct Questions
- ✧ Helpful Links

Public Health Reporting

ELIGIBLE HOSPITAL/CRITICAL ACCESS HOSPITAL
SYNDROMIC SURVEILLANCE REPORTING THROUGH
CLINISYNC (STAGE 2 CORE MEASURE 15)



OHIO'S MU2 POLICY

SYNDROMIC SURVEILLANCE

EpiCenter² is Ohio's statewide syndromic surveillance system used by state and local public health agencies to detect, track and characterize health events such as pandemic influenza, outbreaks, environmental exposures and potential bioterrorism. In real-time, the system gathers de-identified information on patient symptoms and automatically alerts public health when an unusual pattern or trend is occurring.

Eligible hospitals (EHs) can report syndromic surveillance data to EpiCenter on behalf of the Ohio Department of Health (ODH) to meet the public health syndromic surveillance reporting measure for Stage 2 Meaningful Use (MU2). EHs must submit appropriate emergency department data to EpiCenter with all required data elements below using the HLTV2.5.1 format on a continued, ongoing basis.

• Date/Time of visit	• Patient ID/encrypted medical record number
• Patient sex	• Patient chief complaint
• Patient age or date of birth	• Initial patient temperature*
• Patient home zip code	• Discharge disposition*
• Facility	• Discharge diagnosis*

➤ EHs that met the Stage 1 syndromic surveillance menu option prior to 10/1/2012 and have continued to report using HLTV2.5.1 may continue to do so for MU2, but only if they were providing all of the required data elements listed above including the three additional ODH required fields marked with an asterisk* and the source system is 2014 certified for this measure. If an EH was reporting to EpiCenter using HLTV2.5.1 and was not including the three additional fields, they must convert to HLTV2.5.1 to meet MU2.

Related Link: <http://www.odh.ohio.gov/healthdata/EpiT/Syndromic%20Surveillance.aspx>

MU2 Measure:

Successful ongoing submission of syndromic surveillance data from the hospital's 2014 certified source system (CEHRT) to a public health agency for the entire EH reporting period.

Related Link: http://www.cms.gov/Regulations-and-Guidance/Legislation/EHRIncentivePrograms/downloads/Stage2_HospitalCore_15_SyndromicSurveillanceDataSubmission.pdf

²In 2009, RODS was replaced by EpiCenter managed by Health Monitoring Systems (HMS) located in Pittsburgh, Pennsylvania.

1

Topics

Ohio's
Statewide
Exchange

Public
Health
Reporting

Transitions
of Care

Other HIE
Measures

Stakeholder
Perspective
Q&A

Transitions of Care

MU Stage 1 Measure

- **Menu Measure 7**
- Summary of care record provided (50%)

MU Stage 2 Measures

- **Core Measure 12**
- Summary of care record provided (50%)
- Electronic transmission of summary of care record (10%)
- CMS testing or successful exchange of summary of care to an unlike EHR

Transitions of Care

Content

Must contain, at a minimum, a Common MU Data Set

Requires standard vocabularies:
SNOMED-CT, RxNorm,
LOINC, CVX,
Language, Race,
Ethnicity Codes

Format

HL7 Version 3
Consolidated Clinical
Document Architecture
(C-CDA)

Certified EHR must
produce Summary of
Care in the proper
format (C-CDA)

Transport

Two options:
1) Direct protocol
using certified EHR*
2) Through eHealth
Exchange Participant

Summary of care must
be verified as
received in order to
count

HIE Certifications for Transitions of Care

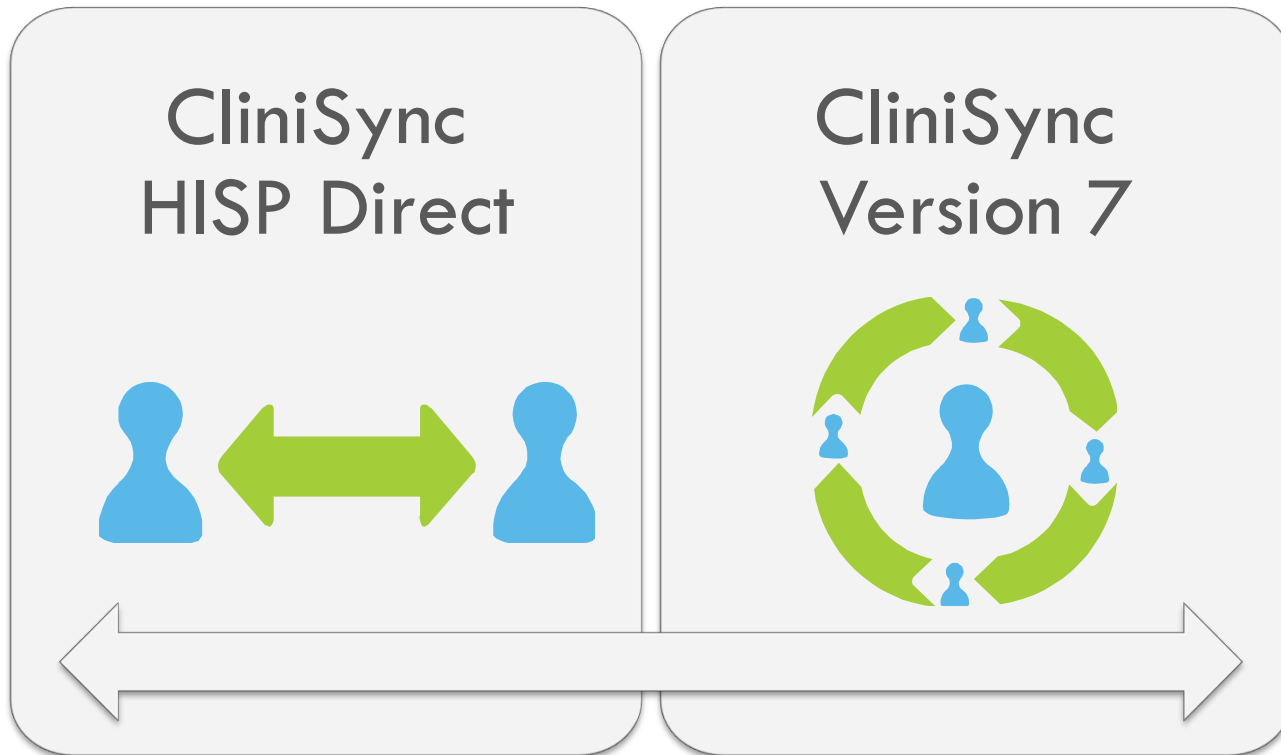


- CliniSync created DURSA policy and signed agreement
- Application submitted to HealtheWay
- We are expecting HealtheWay certification by 1Q 2014
- HealtheWay participation only required for HIE



- CliniSync anticipates EHNAC accreditation by 4Q 2013

Transitions of Care



- Flexibility for hospitals to choose the transport option that best suits their needs
- Confirm receiving provider receives summary of care
 - Receive reports for attestation numerator

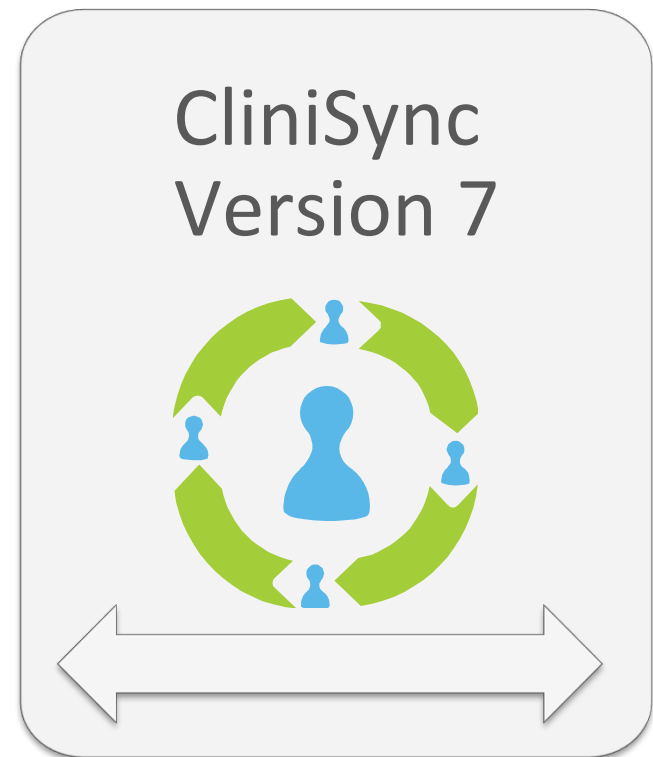
Transitions of Care



- ✧ Expose CliniSync HISP Provider Directory through your CEHRT email function so you can send summaries of care to our providers
- ✧ Supports Direct-compliant Message Delivery Notification (MDN)
- ✧ Supports XDR Direct protocol
- ✧ Can link to other HISPs such as Surescripts, HealthBridge, Michigan Health Connect, Michigan Health Information Network, West Virginia Health Information Network and Secure Exchange Solutions

Transitions of Care

- ✧ Use our new integrated solution to exchange summaries of care through our referral, secure email, publishing or search/retrieval capabilities
- ✧ Includes ability for providers to search for a patient's longitudinal health record with their consent
- ✧ Includes enhanced reporting capabilities



Topics

Ohio's
Statewide
Exchange

Public
Health
Reporting

Transitions
of Care

Other HIE
Measures

Stakeholder
Perspective
Q&A

Patient Engagement

MU Stage 1 Measure

- **Core Measure 1 1**
- Patients who request an electronic copy of their health information are provided it within 3 business days (>50%)

MU Stage 2 Measure

- **Core Measure 6**
- Patients have information available online within 36 hours of discharge (>50%)
- Discharged patients view online, download or transmit information (>5%)

How CliniSync Can Help

FollowMyHealth

Version 2.0 has received
2014 modular EHR
certification

FollowMyHealth will work
with your technical team to
establish connectivity

Options

We are exploring other
capabilities as well. Options
that would have an
integrated solution with
CliniSync technology



-Take advantage of negotiated discounts for these solutions

Structured Lab Results to Providers

MU Stage 2 Measure for EH

- **Menu Measure 6**
 - > 20% of electronic orders received are sent as structured lab results to ordering provider
 - Must use CEHRT to send HL7 2.5.1 with LOINC codes

MU Stage 2 Measure for EP

- **Core Measure 10**
 - > 55% of results ordered are incorporated as structured data into CEHRT
 - EP may count in the numerator all structured data entered into EHR through HIE, manual entry or other means.
 - EHR Incentive Programs do not specify the use of code set standards in meeting the measure for this objective. However, EHR must be able to incorporate HL7 v2.5.1 and LOINC codes to be certified.

How CliniSync Can Help

Hospital Lab Results Delivery

Upgrade hospital lab results interface to HL7 2.5.1 with LOINC

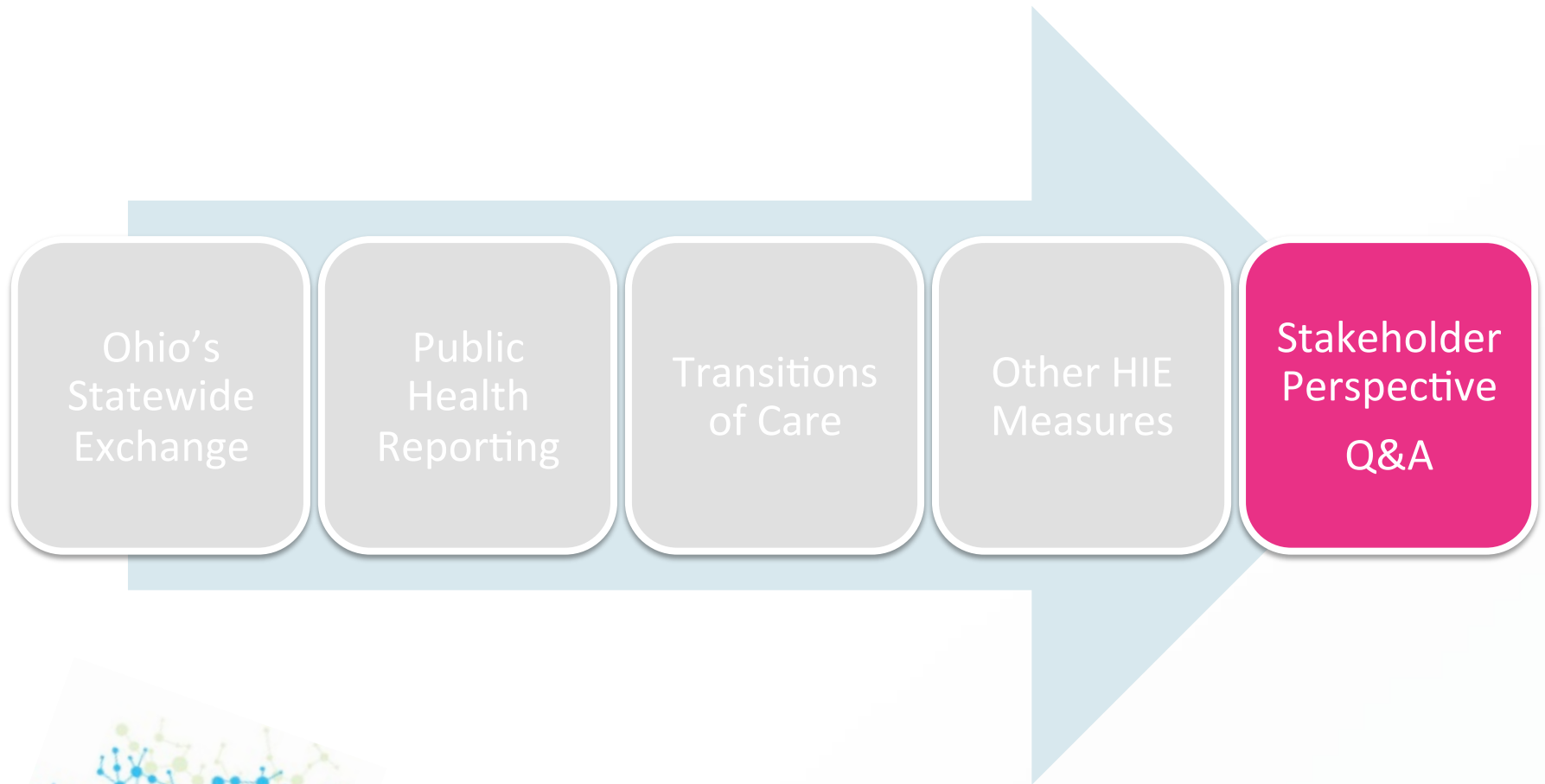
Physician Lab Results Receipt

Can receive hospital lab results either as HL7 v2.5.1 or HL7 v2.3 depending upon receiving physician capabilities



-Hospitals still maintain a single laboratory results interface into the HIE

Topics



Sisters of Charity Health System

Robin Stursa, MBA
Vice President & CIO



SISTERS of CHARITY
HEALTH SYSTEM

A Ministry of the Sisters of Charity of St. Augustine

Benefits of Partnership



Ohio Health Information Partnership
Health Information in a Heartbeat



SISTERS of CHARITY
HEALTH SYSTEM

A Ministry of the Sisters of Charity of St. Augustine

- Collaboration
- Risk Pool
- Offsets Scarcity of Resources
- Access to Trusted Experts
 - Interpretation of MU Regs
 - Sharing of Best/Least Practices

Account Status Report



Ohio Health Information Partnership
Health Information in a Heartbeat



SISTERS of CHARITY
HEALTH SYSTEM

A Ministry of the Sisters of Charity of St. Augustine

- Monthly Status Meeting
 - Removing Road Blocks
 - Devising Outreach Efforts
 - Physician Liaisons
 - Timing Expectations
- Report Parameters/Example



Account Status Report

Mercy Medical Center Canton

10/1/13 – 10/31/13



Community Health Record

Active Interfaces:

- ADT: Meditech Magic
- LAB: Meditech Magic
 - General, Microbiology, Blood Bank, Path
- RAD: Meditech Magic
- TRANS: Meditech Magic

Number of messages contributed in 2013:

- Q1: 19,201 Q2: 477,256 Q3: 454,252
- This month: 151,377

Open HIE Work Items

- None

Client Planned System Upgrades

- None reported

Client Test Environment

Currently Pointed to HIE Cert Environment

- No (PROD pointed to CERT – CERT Validation)

CliniSync Change Management Policy

<https://clinisync.zendesk.com/home>

CliniSync News and Notices

CliniSync Public Health Reporting

<http://www.clinisync.org/index.php/hospitals/clinisync-public-health-reporting.html>

Electronic Lab Reporting for Public Health

<http://www.clinisync.org/index.php/hospitals/electronic-lab-reporting-for-public-health.html>

Results Distribution

Connected Practices: 1

Providers: 3

Connected EHRs: 1 (# = practices attached)

Practices Connected via iNbox/PDF delivery: 0

Results Delivered this month: 83

Open EHR Integration Projects

In Progress

- iNbox(1) ; eMD (2); NextGen (1); Greenway (1)

Scheduled/Planned

- Allscripts (3); eClinicalWorks (2); NextGen (2) ;

Other Services

Public health reporting

- Syndromic Surveillance – planning w/ HIE
- Immunization Registry - planning w/ HIE
- Electronic Lab Reporting - planning w/ HIE

Lab Orders

- Interest in HIE delivery unknown

Patient Health Record Portal

- Meditech Patient Portal

Site Designated Contacts

- Site Administrator: Debbie Bryan
- Privacy Officer: Barbara Yingling
- Practice Outreach: TBD

Important HIE Links

- CliniSync Website www.clinisync.org
- CliniSync Policies
<http://www.clinisync.org/index.php/about-us/policies.html>
- CliniSync Support
<http://www.clinisync.org/index.php/support.html>

Value Add Services



Ohio Health Information Partnership
Health Information in a Heartbeat



SISTERS of CHARITY
HEALTH SYSTEM

A Ministry of the Sisters of Charity of St. Augustine

- Preferred Pricing
 - Interfaces
 - Patient Portal
- CliniSyncPLUS
- Meeting MU Requirements

Meeting MU Requirements



Ohio Health Information Partnership
Health Information in a Heartbeat



SISTERS of CHARITY
HEALTH SYSTEM

A Ministry of the Sisters of Charity of St. Augustine

- Transitions of Care
- Public Health Reporting
 - Syndromic Surveillance
 - Immunization Registry
 - Electronic Lab Reporting



QUESTIONS / COMMENTS?

- Please submit questions and comments through the chat feature on Readytalk.



Thank You to Our Sponsor

