



eHEALTH INITIATIVE

Real Solutions. Better Health.

Achieving Information Exchange: An Inside Look at Two Approaches to Interoperability at Scale

March 14, 2013

****Audio for this webinar streams through the web. Please make sure the sound on your computer is turned on. If you need technical assistance, please contact ReadyTalk Customer Care: 800.843.9166.**



eHEALTH INITIATIVE

Real Solutions. Better Health.

Jonathan Dimsdale

Director, Research and Programs

eHealth Initiative

Housekeeping Issues

- All participants are muted
 - To ask a question or make a comment, please submit via the chat feature and we will address as many as possible after the presentations.
- Audio and Visual is through www.readytalk.com
 - If you are experiencing technical difficulties accessing audio through the web, there will be a dial-in phone number displayed for you to call. In addition, if you have any challenges joining the conference or need technical assistance, please contact ReadyTalk Customer Care: 800.843.9166.
- Today's slides can be downloaded for free on our homepage at www.ehealthinitiative.org
- Today's webinar is being recorded
 - Members can access slides and replays of any webinar for free from eHI's store
 - Non-members can purchase access to any webinar replay for \$25.00
 - eHI Store
 - <http://www.ehealthinitiative.org/store.html>



About eHealth Initiative

- Since 2001, eHealth Initiative is the only national, non-partisan group that represents all the stakeholders in health care.
- Mission to promote use of information and technology in healthcare to improve quality, safety and efficiency.
- Coalition of over 200 organizations and the most influential groups in data issues, HIT and HIE.
- eHealth Initiative focuses its ***research, education and advocacy*** efforts in four areas:
 - Using Data and Analytics to Understand and Improve Care
 - IT Infrastructure to Support Accountable Care
 - Technology for Patients with Chronic Disease
 - Connecting Communities through Data Exchange




Thank You to Our Sponsor



Agenda

- Welcome – 1:00 p.m.
 - **Jonathan Dimsdale**, eHealth Initiative
- 1:05 – 1:20 PM – **Arien Malec**, RelayHealth
- 1:20 – 1:35 PM – **Julie Patterson**, Baptist Healthcare System
- 1:35 – 1:50 PM – **Linda Reed**, Atlantic Health and Jersey Health Connect
- 1:50 – 2:25 PM – Questions and Answers
- 2:25 PM – Final Thoughts from Speakers and Closing





Achieving Information Exchange: *An Inside Look at Two Approaches to Interoperability at Scale*

Baptist Health, Louisville, KY and
Jersey Health Connect, Morristown, NJ

Arien Malec



Vice President, Strategy and Product Marketing, RelayHealth

- Oversees strategic development and marketing for RelayHealth Clinical Solutions
- Recently detailed to the Office of National Coordinator (ONC) as Coordinator of the Direct Project
- Former Coordinator for the Standards and Interoperability Framework for ONC; developed the standards strategy and participatory framework for many of the standards included in Edition 2014 ONC Certification
- BA in International Relations from The American University, Washington, D.C.



Julie Patterson



Corporate IS Program Manager, Baptist Health

- Focused on Health Information Exchange, Personal Health Records and Meaningful Use for Baptist Health
- 25 years of experience in Healthcare Information Systems - areas of focus have included Admitting/Registration, Medical Records/Health Information Management, and Order Entry
- Member of HIMSS, Bluegrass HIMSS, AHIMA and KHIMA
- BS in Computer Science from the University of Kentucky, Lexington, Ky.
- Currently pursuing an MBA ,Webster University, St. Louis, Mo.



About Baptist Health

More than

2.5 million
patients



7 hospitals



2,400-bed
health system

368

Employed
Physicians



220

Affiliated
Physicians

Extensive affiliate network

- Urgent care practices
- Outpatient surgery centers
- Home health

Objectives

Reduce readmissions

Improve patient accountability

Help providers make informed clinical decisions

Challenges

Disparate health information systems, platforms

- Employed physicians use Allscripts Enterprise
- Oncologists use Mosaic EHR
- Emergency department uses T-Systems

Affiliated providers have a greater variety of systems

- Need to construct interfaces
- Overcome interoperability challenges

Ability to address impact of Meaningful Use

- Number of practices requesting hospital-based results delivery implementations increased
- Still working through backlog



Goals

Move data

- From hospitals to provider practices

Expand IT capabilities

- Support order entry and delivery via provider's EMR

Exchange continuity of care documents (CCD)

Exchange data between ambulatory systems

- Move data to the hospital

Create single interface for providers to view all patient information

- Develop robust personal health record platform driven by data from the EHR

Critical Issues



Lack of technical expertise and resources

Difficult to bring all stakeholders to the table

Must frequently coordinate

- Smaller practices
- Health IT system vendors
- Third-party health IT consultants

Vendors' unwillingness to collaborate

Solutions



Identify providers using the same EHR system

- Build an interface for all simultaneously

Work with EHR vendors to create hub systems

- Interface between Baptist's health IT infrastructure and the vendor's system

Dedicated staff support from RelayHealth

- Available to assist with system implementation

Results



Satisfying providers with the advantages of being connected and sharing data



Meeting providers' clinical information needs



Enabling patients to take control of their data and become active participants in their care

Linda Reed, RN, MBA, FCHIME



Vice President of Information Systems and CIO of Atlantic Health,
President of Jersey Health Connect

- Served as a member of the Board of Trustees of The College of Health Information Management Executives (CHIME) and is a CHIME Fellow
- Currently serves as a trustee for the Francis E. Parker Home and affiliated long term care services in New Brunswick, NJ
- BA from Rutgers University, New Brunswick, NJ
- MS in Nursing with distinction from Pace University in Peekskill, NY
- MBA with honors from Widener University in Chester, Pa.
- Member of Sigma Theta Tau, International Nursing Honor Society and Sigma Beta Delta, National Honor Society for Business, Management and Administration.



About Jersey Health Connect

27 organizations

Committed to secure
exchange of health
information



More than

1,900 physicians

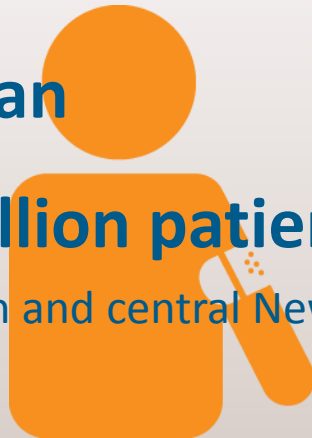
Secure clinical connectivity
despite disparate EHRs



More than

6 million patients

northern and central New Jersey



**Self-sustaining health
information organization**

One of the country's largest



Jersey Health Connect – NJ HIO's

Jersey Health Connect

Atlantic Health
 Overlook Medical Center
 Morristown Medical Center
 Newton Medical Center
 CentraState HealthCare System
 Children's Specialized Hospital
 Chilton Memorial Hospital
 CJHIEP (physician group)
 Deborah Heart and Lung Center
 Englewood Hospital and Medical Center
 Francis E. Parker Memorial Home
 Hackensack University Medical Center
 Holy Name Medical Center
 Hunterdon Healthcare
 JFK Health System
 Palisades Medical Center
 Robert Wood Johnson University Health System
 RWJUH at New Brunswick
 RWJUH at Hamilton
 RWJUH at Rahway
 Children's Specialized Hospital
 Barnabas Health
 St. Barnabas Medical Center
 Clara Maass Medical Center
 Saint Clare's Health System
 Saint Peter's Healthcare System
 Somerset Medical Center
 Trinitas Regional Medical Center
 Summit Medical Group (physician group)
 Valley Medical Center
 VISTA/Optimus Health System (IPA)

Camden HIE

Lourdes Health System
 Cooper University Hospital
 Virtua Camden

Trenton

Capital Health
 St. Francis

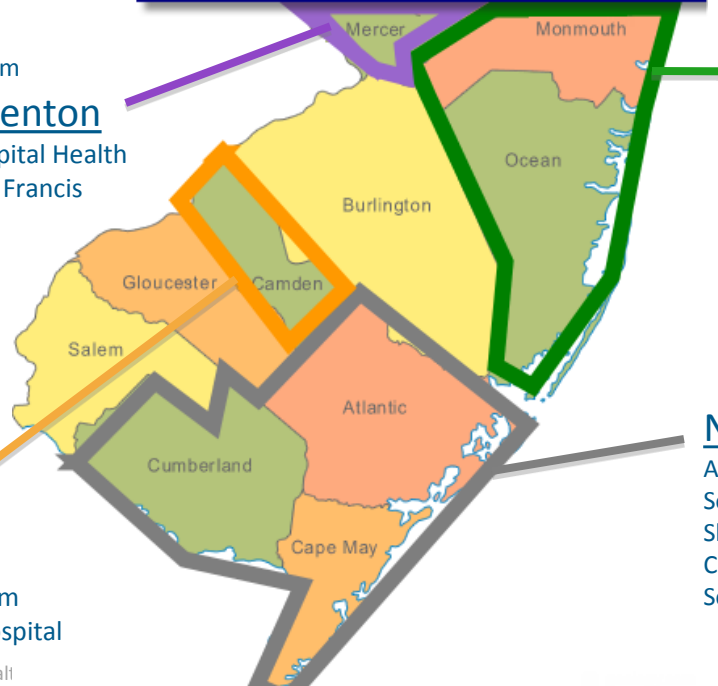


Health-e-CTi-NJ

North Beth Israel Medical Center
 East Orange General Hospital
 St. Michael's Medical Center
 UMDNJ
 St. Joseph's Healthcare System
 Meadowlands
 Jersey City Medical Center

Monmouth-Ocean HIE

Meridian
 Monmouth Medical Center
 Kimball Medical Center
 Community Medical Center



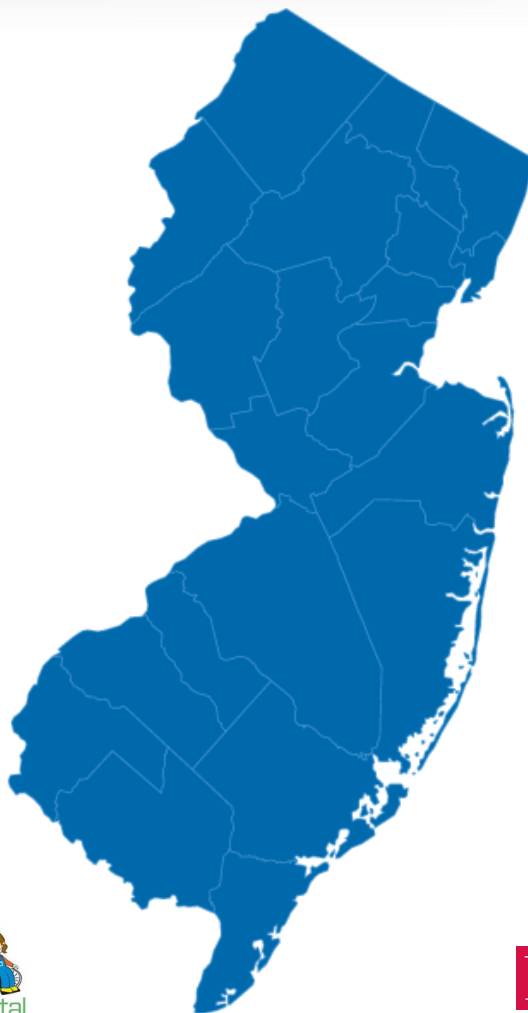
NJ Shine

AtlantiCare
 South Jersey Health System
 Shore Memorial Hospital
 Cape Regional Medical Center
 SeaShore Gardens (Nursing Home)



JERSEY Health Connect

Connecting your healthcare needs



Objectives

Ensure health information is available

- When and where it's needed, locally and nationally

Accelerate HIE activity

- Real-time clinical exchange

Improve care coordination

- Access, outcomes and efficiencies

Comply with national standards

- Privacy and security considerations

Provide consumers with their health information

- Encourage active and informed participation

Challenges

Connect different technologies

Include physician practices not ready to commit to a complex EHR deployment

Avoid costly infrastructure investments and resource-intensive installations



Goals

Automate routine tasks

Simplify ability to exchange orders, results and other communications

Facilitate secure exchange of clinical data across the community

- Hospital-based laboratory and radiology results
- Cardiac diagnostic testing
- Consult notes/discharge summaries

Critical Issues



Physician practices with EHRs

- Need to import data directly

Physicians without EHRs

- Need to collaborate in near real-time

Privacy and security must be ensured

Effective governance must be established

Solutions



Clinical integration engine

- Patient identity
- Patient consent and privacy
- Clinical terminology mapping

Patient engagement tools

- Enable patients to take action in their care

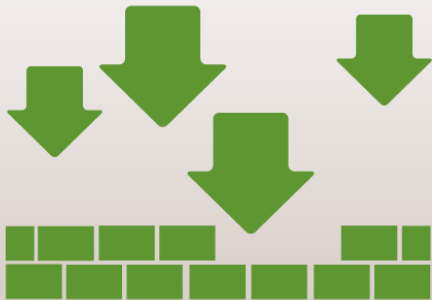
SaaS- based

- Continuous development

Repeatable integrations with top HIT vendors

- Connect disparate systems

Results



Barriers to collaboration and enhanced care efficiency reduced



Workflows and processes for referring providers improved



Strategic goals such as increasing physician alignment realized



Q&A

THANK YOU TO OUR MODERATOR AND SPEAKERS!



Julie Patterson

Corporate IS Program
Manager, Health Information
Exchange at Baptist
Healthcare System



Arien Malec

Vice President, Data
Platform Solutions for
RelayHealth



Linda Reed

Vice President of Information
Systems and Chief Information
Officer of Atlantic Health, which
includes Morristown, Overlook
and Newton Medical Centers

Thank You to Our Sponsor



Upcoming eHealth Initiative Events

SAVE THE DATE!

eHI's 2nd Annual Data and Analytics Forum – August 1, 2013 at the Gaylord National Harbor Resort and Conference Center in Washington, DC area!

Join health IT executives, experts and innovators as they share examples of best practices and case studies on:

- Leveraging analytics to facilitate accountable care
- Use of analytics in health insurance exchange operations
- Predictive analytics for genomics and personalized medicine
- Integration of data and EHR Systems
- Analytic techniques for community, population health management and surveillance
- Data and analytic services for health information exchange
- Privacy issues in the era of Big Data & Analytics
- Building the business case for data analytics
- Quality improvement through data analytics
- Data policy for addressing interoperability and standardization issues

